



xyloba

The marble run, that makes music.



Xyloba - The marble run, that makes music.

The Xyloba interlocking system has an almost unlimited number of different setup variations. The fun really begins when builders also compose music with Xyloba. Chimes of various pitches can be built into the marble run. Which chimes you use determine which melody will play. As the marble rolls down the track, it strikes the individually mounted chimes. Ramps of different lengths produce the rhythm. By referring to the composition instructions, even young children can construct fantastic tunes.

Xyloba is a modular building block system. All components can be freely combined and upgraded to further levels with extension kits.

Xyloba is a creative marble run for building and composing music and can be enjoyed by young and old alike. Get to know the Xyloba

modular system in its three, progressively more comprehensive models: Xyloba piccolino, mezzo and orchestra. The focus is on creativity involving different tune sequences that can be generated through variations in tower designs.

For big and small builders and composers who have already taken their first steps with Xyloba, the Xyloba melodia melody boxes fit the bill exactly.

They can be set up to play the first lines of a variety of familiar songs. The first part of popular songs can be built and played.

The advantages of Xyloba

Xyloba is a modular building block system. All components can be freely combined and upgraded to further levels with extension kits.

Xyloba sharpens motor skills, imagination and concentration, also promotes spatial awareness, creativity and musical understanding - effortlessly and with fun in the process!

This melodic marble run is also used as an educational tool. It visualizes the musical process and combines it with the pleasure of playing.

Thanks to the stable interlocking system, it is also possible to build high marble runs.

Xyloba's high-quality sound modules are tuned precisely and produce a pleasant sound.

The wooden components are manufactured in a workshop for handicapped people in Switzerland.



melody track: Frère Jacques

Xyloba - The marble run that makes music

Combine, construct, compose! There are no limits to the individual creativity.



Individual Xyloba components

Building brick



Art. 22201

Passage brick



Art. 22204

Sound brick



Art. 22202

Sound brick without track exit



Art. 22203

Roll track crossing



Art. 22307

Roll track one eighth

Roll track one eighth triplet

Roll track one eighth dotted



Marbles (experimental marbles, wooden marbles and Xyloba glass marbles)



Art. 22051



Art. 22052



Art. 22053

Art. 22304

Art. 22305

Art. 22306

Building brick

This is used to bring the elements with special functions to the correct height.

Passage brick

The roll track can be directed through this element.

Sound brick

The sound brick is one of the most important elements in the towers of Xyloba. The sound plates are inserted in its dentures.

Sound brick without track exit

If the ball should leave a sound brick only further down in the

tower, this element is used together with the start brick in the tower.

Start brick in the tower

If a track start is in the middle of a tower, this element must be used for the start. This is also required under the sound brick without track exit element.

Start brick

This is where the ball is thrown in on the track starts at the top of the towers.

Eighth note

This element creates the note value of note eighth. The ball does not

change the tower as with the one eighth roll track.

Roll track short & long

The roll track short corresponds to the note value of one quarter. The roll track long corresponds to the note value of one half.

Roll track one eighth

This element places a sound plate on a roll track short. It sets the note value of one eighth. The ball switches the tower, other than with the eighth note element.

Start brick in the tower



Art. 22206

Start brick



Art. 22205

Eighth note



Art. 22303

Base plate



Art. 22207

Points



Art. 22072

Roll track short & long



Art. 22302

Art. 22301

Xylophon/Glockenspiel



Art. 22031

Single sound stroke



Art. 22308

Sound plates



Art. 22041. G2 bis D4

Roll track one eighth triplet

This element places a sound plate on a roll track short such that it creates the final eighth of a triplet.

Roll track one eighth dotted

This element places a sound plate on a roll track short such that a dotted eighth is created.

Base plate

The orange base plates improve the stability of the structures. They also collect the balls arriving.

Points

This element allows optionally directing a ball in two different

track courses. The points require for their structure a passage block

Roll track crossing

With this element, two short tracks can cross at the same height.

Sound plates

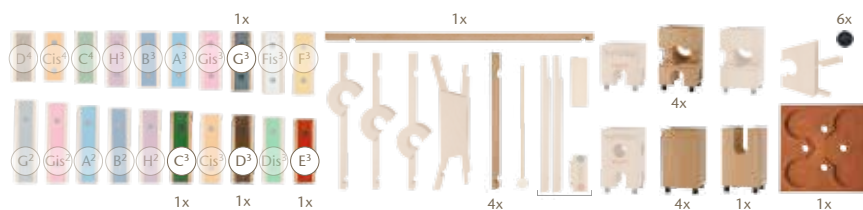
The sound plates create the sound in the Xyloba ball track that can be heard. It is inserted in the components at the intended places. 20 different notes from G2 to D4, including all nuances, can be constructed with the Xyloba system.

Single sound stroke

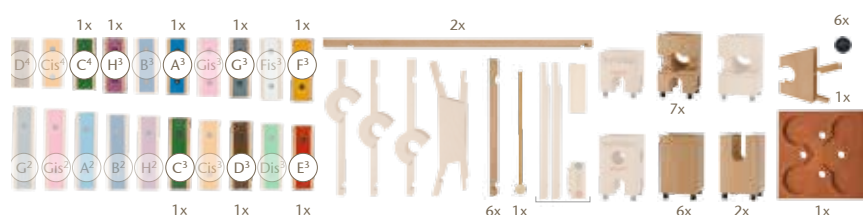
If no sound should be heard in a sound brick, this element is used instead of a sound plate. In this way, the previous sound is extended by a random value.

The Xyloba Kits

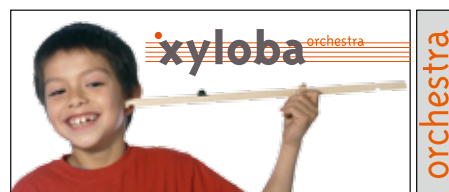
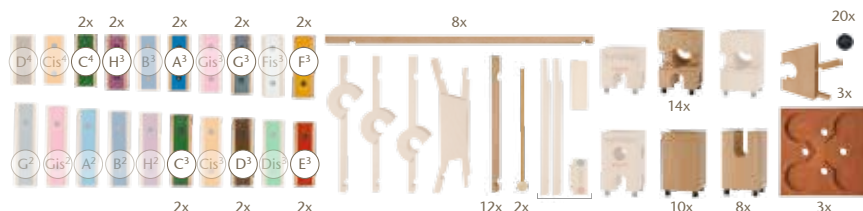
With **Xyloba piccolo** you can build marble runs that are different every time. The 4 interchangeable sound modules produce simple melodies.
Art. 22011 - 25 parts



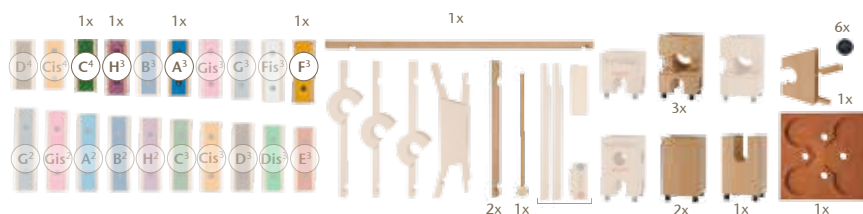
With **Xyloba mezzo** you can create a great variety of melodic marble runs, using 8 interchangeable sound modules to produce complex melodies.
Art. 22012 - 40 parts



Xyloba orchestra is ideally suited for kindergartens and nursery schools. The large number of building components encourage the children to participate. You can create a great variety of marble runs, using the 16 interchangeable sound modules to produce very fun and creative melodies.
Art. 22013 - 96 parts

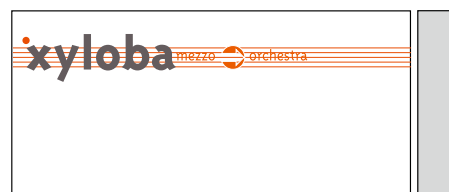
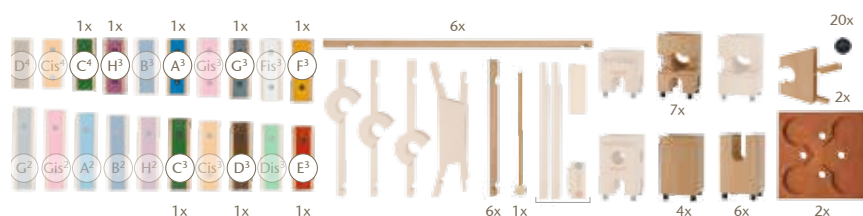


Upgrading Xyloba piccolo to the mezzo extension kit
Art. 22014 - 22 parts



Inhalt Xyloba Erweiterung piccolo -> mezzo

Upgrading Xyloba mezzo to the orchestra extension kit
Art. 22015 - 62 parts



*For our older and
younger beginners*

The Xyloba kits

Get to know the Xyloba modular system in its three, progressively more comprehensive models: Xyloba piccolino, mezzo and orchestra. The focus is on creativity involving different tune sequences that can be generated through variations in tower designs. The options for constructing tracks and composing tunes by combining the various pieces and chimes are virtually endless.

Xyloba is a unique product and a fantastic gift idea.



xyloba mezzo

*For our older and
younger virtuosos*

For big and small builders and composers who have already taken their first steps with Xyloba, the Xyloba melodia boxes melodia 1 and 2, melodia Christmas Songs und Xyloba melodie tracks fit the bill exactly.

The Xyloba melodia kits

The Xyloba melodia folksongs 1 and 2 and the melodia Christmas Songs melody kits allows you to build and play the first part of popular songs - construction fun and musical delight for the whole family.

Want more? It's easy to add more songs to your list; at www.xyloba.ch/de/xylocalc a list of the parts you need is only a mouseclick away.

The Xyloba melody tracks

Xyloba is the only marble run that allows the player to build and play complete melodies. The enclosed, easy-to-follow assembly instructions make construction a snap.



Happy Birthday to you ...



Silent night, holy night ...

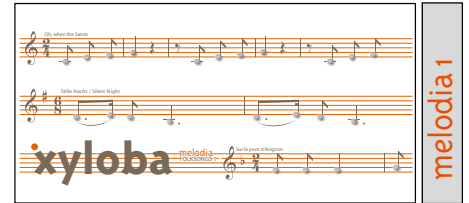
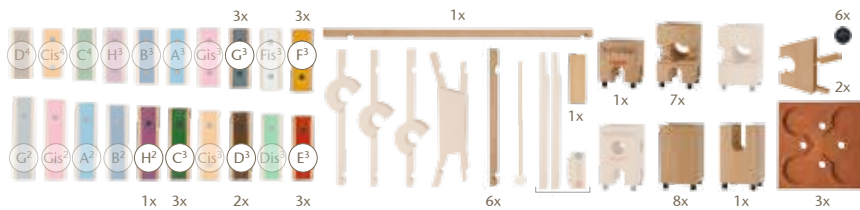


Weisst du, wieviel du wieviel Sternlein ...

The Xyloba melody kits

Xyloba melodia folksongs 1 melody box with the first lines from 4 familiar songs: Sur le pont; Der Mond ist aufgegangen; Oh, when the Saints; Silent Night.

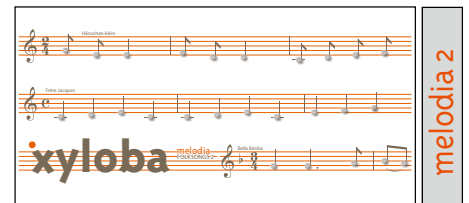
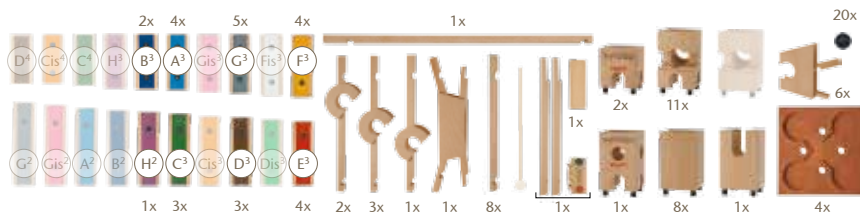
Art. 22016 - 51 parts



melodia 1

Xyloba melodia folksongs 2 with the first lines from 12 familiar songs: Sur le pont; Der Mond ist aufgegangen; Oh, when the Saints; Silent Night; Frère Jacques; Row, row, row; Summ, summ, summ; Bella Bimba; Happy Birthday; Weißt du wie viel Sternlein stehen; Hänschen klein; L'inverno.

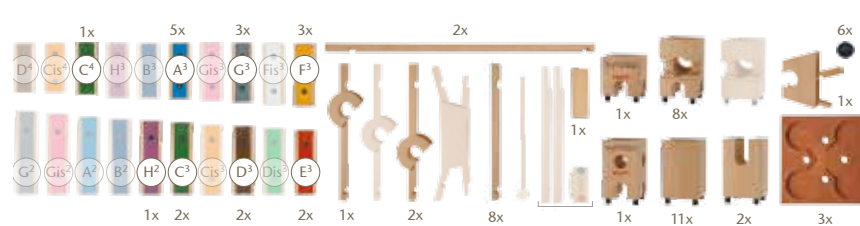
Art. 22017 - 97 parts



melodia 2

Xyloba Melodienkasten melodia Christmas Songs with the first lines from 8 familiar Christmas Songs: Evry Year Again; In der Weihnachtsbäckerei; Jingle Bells; Softly Falls The Snow; Twinkle Little Star; O How Joyfully; O Christmas Tree; Silient Night.

Art. 22019 - 66 parts



Christmas Songs

The Xyloba melody tracks

12 well known tunes to choose from:

1. Frère Jacques	Art. 22601	56 parts
2. Row, row, row your boat	Art. 22602	59 parts
3. Sur le pont d'Avignon	Art. 22603	69 parts
4. Summ, summ, summ	Art. 22604	53 parts
5. Der Mond ist aufgegangen	Art. 22605	89 part
6. Bella Bimba	Art. 22606	123 parts
7. Happy Birthday	Art. 22607	75 parts
8. Weisst du, wieviel Sternlein stehen	Art. 22608	72 parts
9. Hänschen klein	Art. 22609	84 parts
10. L'inverno l'è passato	Art. 22610	92 parts
11. Oh, when the Saints	Art. 22611	96 parts
12. Silent night	Art. 22612	176 parts
13. Melodies-master-set*	Art. 22600	238 parts

*this set allows you to fully build all 12 tunes.

The Xyloba melody booklet



Art. 22401.en

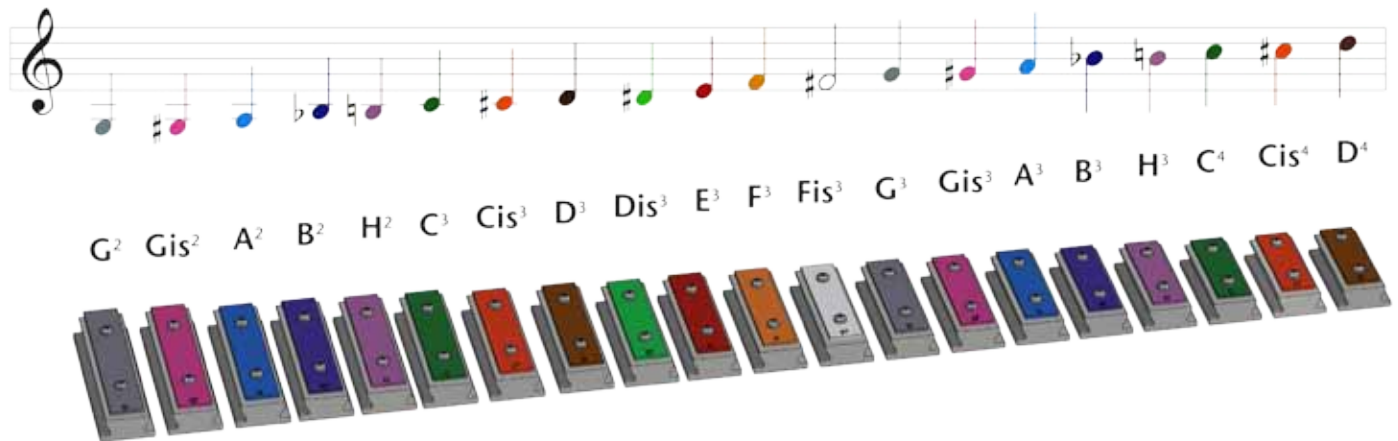


Xyloba melody booklet

12 fantastic, complete tunes are included in the Xyloba melody booklet. The setup of all 12 melodies, including Are You Sleeping Brother John, the German folk song Hänschen klein, Happy Birthday or Silent Night, is made simple thanks to the detailed instructions. The melody booklet contains an overview that quickly shows all the components that are required for each song. Furthermore, the construction of each tune is illustrated step by step.



The Xyloba tones (all Xyloba tunes play two octaves higher than written)



Additional informations on www.xyloba.ch



Inventor: Samuel Langmeier, Zürich (Schweiz)

Xyloba is made from 100 % natural beech wood.

Every single piece is handmade in our workshops with loving care and inspected - up to its final touches.

Xyloba - The marble run that makes music · www.xyloba.ch · swiss handmade

The sheltered Weizenkorn workshops are a social enterprise. They offer over 280 sheltered jobs and training positions predominantly for young women and men who, owing to psychological or psychosocial reasons, do not find temporary or permanent employment on the job market.

Weizenkorn · Oetlingerstrasse 81 · CH-4057 Basel · www.weizenkorn.ch

