

The Xyloba kits *For our older and younger beginners*

Xyloba is a creative marble run for building and composing music and can be enjoyed by young and old alike. Get to know the Xyloba modular system in its three, progressively more comprehensive models: Xyloba piccolino, mezzo and orchestra. The focus is on creativity involving different tune sequences that can be generated through variations in tower designs.

With **Xyloba piccolino** you can build marble runs that are different every time. The 4 interchangeable sound modules produce simple melodies.

Art. 22011 - 25 parts, 4 x building bricks, 4 x sound bricks, 1 x passage bricks, 1x base plate, 4x roll tracks short, 1 x roll track long, 6 x marbles, 4 x sound plates



With **Xyloba mezzo** you can create a great variety of melodic marble runs, using 8 interchangeable sound modules to produce complex melodies.

Art. 22012 - 40 parts, 6 x building bricks, 7 x sound bricks, 2 x passage bricks, 1x base plate, 6 x roll tracks short, 2 x roll tracks long, 1x eighth note, 6 x marbles, 8 x sound plates, 1 x stick



Xyloba orchestra is ideally suited for kindergartens and nursery schools. The large number of building components encourage the children to participate. You can create a great variety of marble runs, using the 16 interchangeable sound modules to produce complex melodies.

Art. 22013 - 96 parts, 10 x building bricks, 14 x sound bricks, 8 x passage bricks, 3 x base plates, 12 x roll tracks short, 8 x roll tracks long, 3 x eighth notes, 20 x marbles, 16 x sound plates, 2 x sticks



The Xyloba extension kits make it easy to upgrade the piccolino and mezzo kits.

Upgrading Xyloba piccolino to the mezzo extension kit

Art. 22014 - 22 parts, 2 x building bricks, 3 x sound bricks, 1x passage brick, 1 x base plate, 2x roll tracks short, 1 x roll track long, 1x eighth note, 6 x marbles, 4 x sound plates, 1 x stick



Upgrading Xyloba mezzo to the orchestra extension kit

Art. 22015 - 62 parts, 4 x building bricks, 7 x sound bricks, 6 x passage bricks, 2 x base plates, 6 x roll tracks short, 6 x roll tracks long, 2 x eighth notes, 20 x marbles, 8 x sound plates, 1 x stick



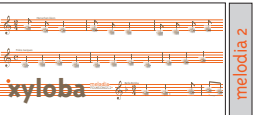
The Xyloba melody kits *For our older and younger virtuosos*

For big and small builders and composers who have already taken their first steps with Xyloba, the Xyloba melodia melody boxes fit the bill exactly. The first part of popular songs can be built and played.

Xyloba melody kit melodia folksongs 1 with the first lines from 4 familiar songs
Art. 22017



Xyloba melody kit melodia folksongs 2 with the first lines from 12 familiar songs
Art. 22018



Xyloba melodia Christmas Songs with the first lines from 8 familiar Christmas Songs
Art. 22019



Xyloba melodia Lullabies 1 with first lines from familiar Lullabies
Art. 22020



Xyloba melodia Kindergarten 1 with first lines from familiar Kindergarten Songs
Art. 22021



Xyloba melodia „Happy Birthday“ with first lines from Happy Birthday
Art. 22701



Want more? It's easy to add more songs to your list; at www.xyloba.ch/en/xylocalc a list of the parts you need is only a mouseclick away.

The Xyloba melody booklet

12 fantastic, complete tunes are included in the Xyloba melody booklet. The setup of all 12 melodies, including Are You Sleeping Brother John, the German folk song Hänschen klein, Happy Birthday or Silent Night, is made simple thanks to the detailed instructions. The melody booklet contains an overview that quickly shows all the components that are required for each song. Furthermore, the construction of each tune is illustrated step by step.



Art. 22401.en

The Xyloba melody tracks

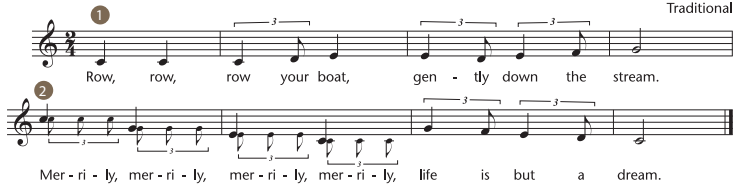
Xyloba is the only marble run that allows the player to build and play complete melodies. The enclosed, easy-to-follow assembly instructions make construction a snap.

12 well known tunes to choose from:

1. Frère Jacques	Art. 22601	56 parts
2. Row, row, row your boat	Art. 22602	59 parts
3. Sur le pont d'Avignon	Art. 22603	69 parts
4. Summ, summ, summ	Art. 22604	53 parts
5. Der Mond ist aufgegangen	Art. 22605	89 parts
6. Bella Bimba	Art. 22606	123 parts
7. Happy Birthday	Art. 22607	75 parts
8. Weisst du, wieviel Sternlein stehen	Art. 22608	72 parts
9. Hänschen klein	Art. 22609	84 parts
10. L'inverno l'è passato	Art. 22610	92 parts
11. Oh, when the Saints	Art. 22611	96 parts
12. Silent night	Art. 22612	176 parts
13. Melodies-master-set*	Art. 22600	238 parts

*this set allows you to fully build all 12 tunes.

Row, row, row your boat



Melody track: Row, row, row your boat



xyloba
The marble run, that makes music.



Xyloba - The marble run, that makes music.

With Xyloba it's now possible to integrate sound modules, like the ones found in a xylophone, into a marble run – there are 20 tones available, allowing you to recreate well-known songs and even compose your own beautiful melodies. It's one of a kind! Xyloba combines the world of construction and the world of music. Children plan, construct and in doing so get a feel for music, familiarising themselves with concepts such as notes, time and rhythm. The Xyloba interlocking system has an almost unlimited number of different set-up variations. The fun really begins when builders also compose music with Xyloba. Chimes of various pitches can be built into the marble run. Which chimes you use determine which melody will play. As the marble rolls down the track, it strikes the individually mounted chimes. Ramps of different lengths produce the rhythm. By referring to the composition instructions, even young children can construct fantastic tunes.

The advantages of Xyloba:

- Xyloba is a modular building block system. All components can be freely combined and upgraded to further levels with extension kits.
- Xyloba develops motor function and spatial imagination, and facilitates a creative approach to music.
- This melodic marble run is also used as an educational tool. It visualizes the musical process and combines it with the pleasure of playing.
- Thanks to the stable interlocking system, it is also possible to build high marble runs.
- Xyloba's high-quality sound modules are tuned precisely and produce a pleasant sound.



Melody track: Frère Jacques

Individual Xyloba components

Building brick

This is used to bring the elements with special functions to the correct height.

Passage brick

The roll track can be directed through this element.

Sound brick

The sound brick is one of the most important elements in the towers of Xyloba. The sound plates are inserted in its dentures.

Sound brick without track exit

If the ball should leave a sound brick only further down in the tower, this element is used together with the start brick in the tower.

Start brick in the tower

If a track start is in the middle of a tower, this element must be used for the start. This is also required under the sound brick without track exit element.

Start brick

This is where the ball is thrown in on the track starts at the top of the towers.

Eighth note

This element creates the note value of one eighth. The ball does not change the tower as with the one eighth roll track.

Roll track short & long

The roll track short corresponds to the note value of one quarter. The roll track long corresponds to the note value of one half.

Roll track one eighth

This element places a sound plate

on a roll track short. It sets the note value of one eighth. The ball switches the tower, other than with the eighth note element.

Roll track one eighth triplet

This element places a sound plate on a roll track short such that it creates the final eighth of a triplet.

Roll track one eighth dotted

This element places a sound plate on a roll track short such that a dotted eighth is created.

Base plate

The orange base plates improve the stability of the structures. They also collect the balls arriving.

Points

This element allows optionally directing a ball in two different track courses. The points require for their structure a passage block

Roll track crossing

With this element, two short tracks can cross at the same height.

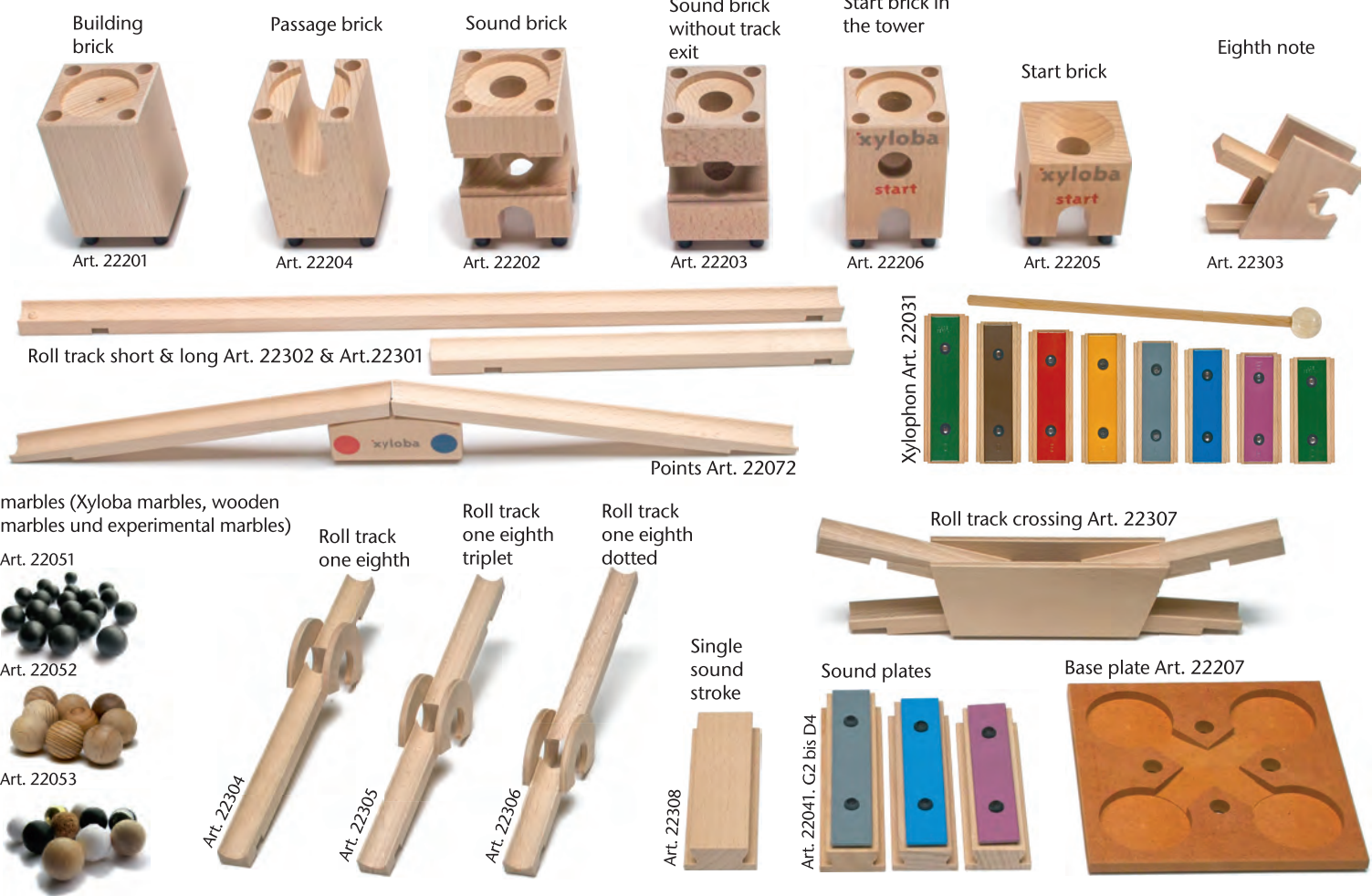
Sound plates

The sound plates create the sound in the Xyloba ball track that can be heard. They are inserted in the components at the indented places. 20 different notes from G2 to D4, including all nuances, can be constructed with the Xyloba system.

Single sound stroke

If no sound should be heard in a sound brick, this element is used instead of a sound plate. In this way, the previous sound is extended by a random value.

Individual Xyloba components



The Xyloba tones (all Xyloba tunes play two octaves higher than written)



Additional informations on www.xyloba.ch



Inventor: Samuel Langmeier, Zürich (Schweiz)

Xyloba is made from 100 % natural beech wood.

Every single piece is handmade in our workshops with loving care and inspected - up to its final touches.

Xyloba - the marble run, that makes music · www.xyloba.ch · swiss handmade

The sheltered Weizenkorn workshops are a social enterprise. They offer over 280 sheltered jobs and training positions predominantly for young women and men who, owing to psychological or psychosocial reasons, do not find temporary or permanent employment on the job market.

Weizenkorn · Oetlingerstrasse 81 · CH-4057 Basel · www.weizenkorn.ch

